

STEP-BY-STEP GUIDE TO BRING YOUR PET: BACK TO CANADA

1



GO TO THE CANADIAN FOOD INSPECTION AGENCY'S WEBSITE ([HTTPS://BIT.LY/CFIAPET](https://bit.ly/cfiapet))

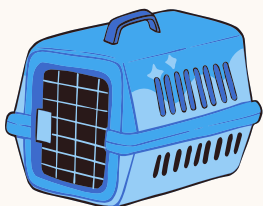
FILL IN THE ONLINE FORM TO LEARN WHAT STEPS YOU NEED TO TAKE.

2



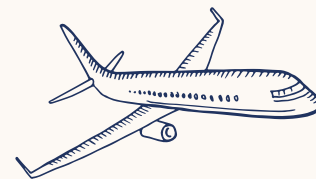
MAKE SURE TO HAVE A VALID RABIES VACCINATION CERTIFICATE AND MICROCHIP INFORMATION FOR EVERY PET YOU OWN AND THAT YOUR PET VACCINATION PASSPORT IS UP TO DATE.

3



DETERMINE YOUR OPTIONS FOR TRANSPORT BASED ON THE SIZE OF YOUR PET.

4



CHOOSE THE MOST CONVENIENT / APPROPRIATE AIRLINE FOR YOUR SITUATION / NEED AND COMMUNICATE WITH BGRS. CHOOSE THE BEST PET CARRIER(S) FOR THE AIRLINE YOU SELECT.

5



IF TRAVELING WITH YOUR PET (CABIN OR BAGGAGE): WHEN YOU HAVE YOUR TICKETS FROM BGRS, CONTACT THE AIRLINE DIRECTLY ASAP TO ENSURE THEY CAN ACCOMMODATE YOUR PET ON THE SELECTED FLIGHT(S). BGRS WILL BE ABLE TO CHANGE FLIGHTS WITH NO PENALTY WITHIN A CERTAIN PERIOD AFTER ISSUING THE TICKETS.

6



FOLLOW YOUR VET'S INSTRUCTIONS TO PREPARE YOUR PET FOR TRAVEL. PACK THEIR LEASH AND OTHER ITEMS IN YOUR BAGGAGE. BRING SOME OF THEIR FOOD WITH YOU.

IT IS IMPORTANT TO DO YOUR OWN RESEARCH!

GOOD TO KNOW

Different ways: to travel with your pet

PET SIZE

TRANSPORT: OPTIONS

SMALL

- IN THE CABIN, UNDER THE SEAT IN FRONT OF YOU
- BAGGAGE COMPARTMENT
- CARGO AIRLINES – NOT ON THE SAME FLIGHT

MEDIUM

- BAGGAGE COMPARTMENT
- CARGO AIRLINES – NOT ON THE SAME FLIGHT

LARGE

- BAGGAGE COMPARTMENT
- CARGO AIRLINES – NOT ON THE SAME FLIGHT

AIRLINES

RULES AND REQUIREMENTS ARE AIRLINE SPECIFIC, AND DEPEND ON CABIN, LUGGAGE OR CARGO REQUIREMENTS OF YOUR PET AS WELL AS ANY OTHER PETS THAT MAY ALREADY BE REGISTERED TO FLY. CALL YOUR PREFERRED AIRLINE FOR MORE INFORMATION.

Each airline has its own regulations. Pay attention to all of the details before making your airline choice!

International bookings for cats and dogs travelling in cargo must be made with a registered IPATA shipping company.

Canadian Food
Inspection Agency
+ 1 800 442 2342

AIR CANADA: 3 WAYS TO TRAVEL WITH YOUR PET

GOOD TO KNOW

1

Pet travelling **IN THE CABIN** as one of your carry-on baggage must fit, in its carrier, **UNDER THE SEAT IN FRONT OF YOU.***

Pet must be small enough to stand, turn around and lie down in its carrier.

[CLICK FOR DETAILS HERE!](#)

SOFT-SIDED carrier
Height: 27 cm (10.5 in)
Width: 40 cm (15.5 in)
Length: 55 cm (21.5 in)

2

Pet travelling in the **BAGGAGE COMPARTMENT**

[CLICK FOR DETAILS HERE!](#)

Maximum allowable weight
Up to 45 kg (100 lb)
(pet and kennel combined)

Maximum carrier size allowed
292 cm (115 in) in linear dimensions
(length + width + height)

3

Pet travelling in the **CARGO**
When your pet will not be on the same flight as you and are travelling alone.

[CLICK FOR DETAILS HERE!](#)

International bookings for cats and dogs travelling in cargo must be made with a registered IPATA shipping company.

Transportation of most pets are prohibited during periods of extreme heat (29.5°C), and many airlines have winter restrictions for temperature and peak travel.

Please check with your carrier!

Some breeds of dogs are not allowed to fly in cargo, please do your research!