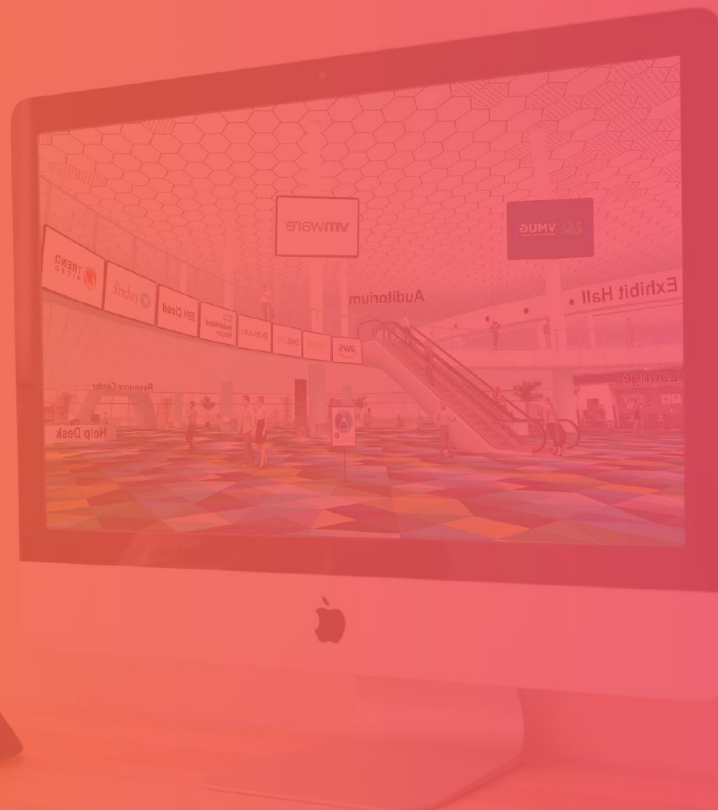




vFAIRS

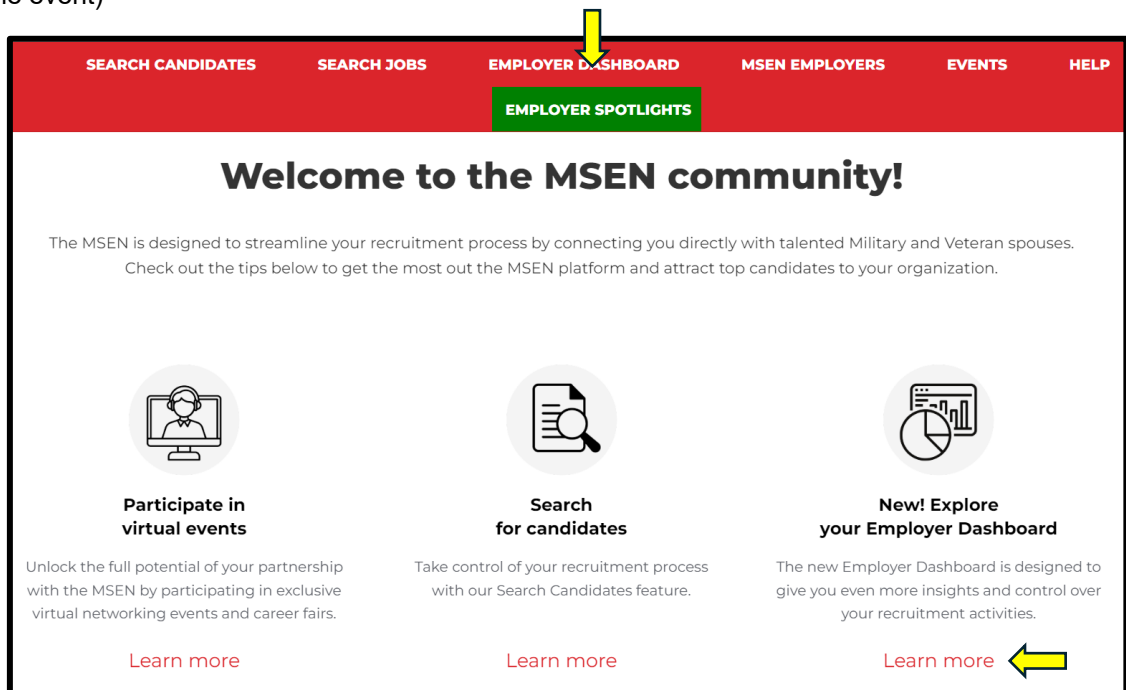
Employer Dashboard



The Employer Dashboard is designed to give you even more insights and control over your recruitment activities. Inside the Employer Dashboard, you can:

- Access detailed candidate visit stats for your booth
- See how candidates navigate through your booth and resources
- Generate custom after-event reports to see how candidates engaged with your booth and reps during virtual career fairs

1. Click on the Employer Dashboard and enter your credentials (same as what you use to log into the event)



2. Log-in to your Employer Dashboard using your existing MSEN username and password

msen.vfairs.com/backend/index.php/site/login

VFAIRS

Sign In

Welcome! Please sign in to access your account.

Email Address
chandni+22@vfairs.com

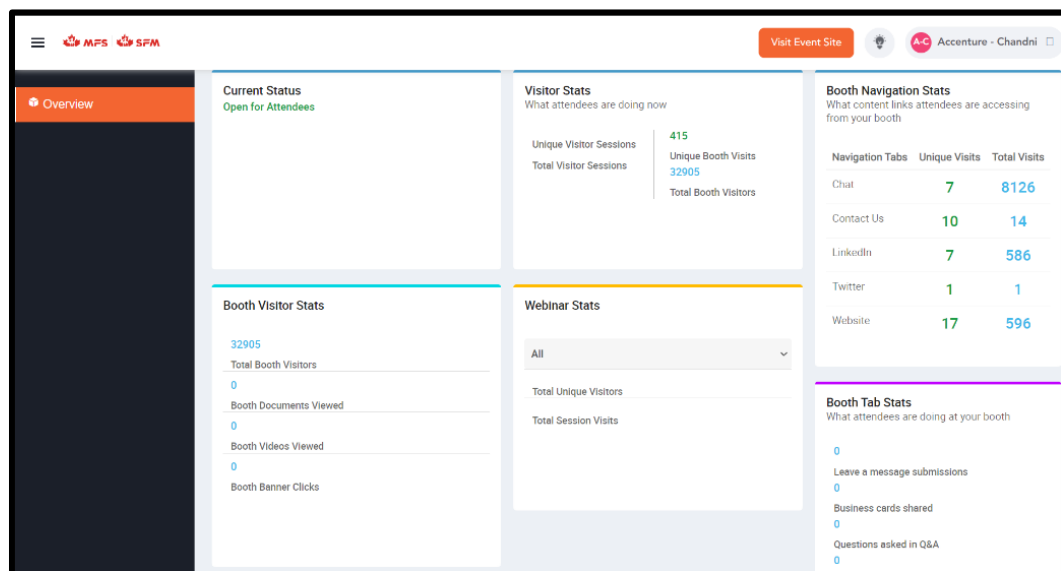
Password

Sign in

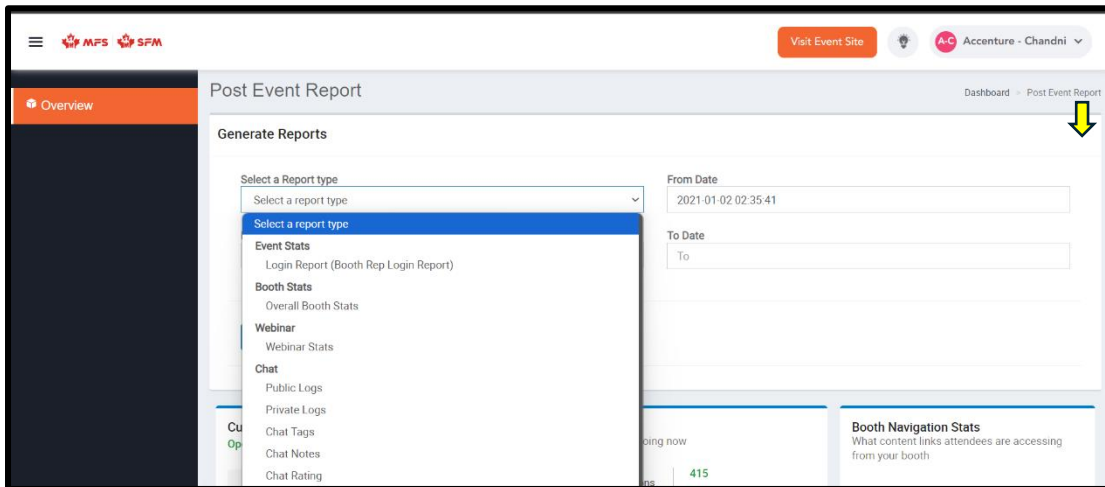
OR

Continue with Google

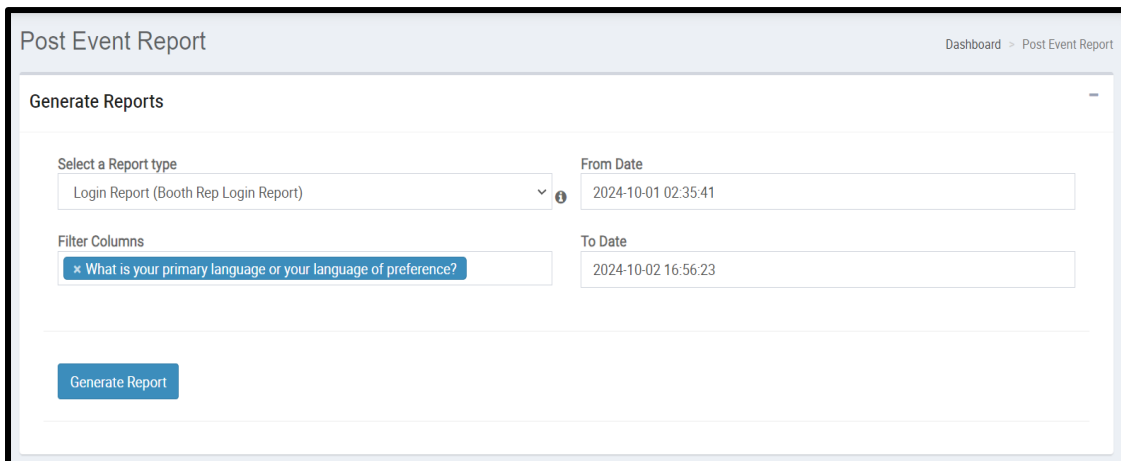
3. You will have access to your booth's analytics dashboard
 - a. **Visitor Stats** shows total visits to the booth and unique visits
 - b. **Booth Navigation Stats** captures clicks on the various content links added to the booth
 - c. **Booth Visitor Stats** shows total visits, documents and videos viewed and clicks to the booth banners.
 - d. **Booth Tab stats** shows business card left at the booth by the candidates, if applicable.



4. Click on the icon next to Generate Reports to view all the analytics available. Click on Select a Report type to view the different analytics available. Filter the from date and time depending on the range of data you are looking for.
 - a. **Login Report** captures all the logins done by your booth reps
 - b. **Overall Booth Stats** includes all the booth visits, documents/videos downloads and banner clicks.
 - c. **Chat logs** includes text chats conducted with the participants.



5. Once you select your preferred report, filter columns based on the details you are looking for. These are all the questions they answered during the registration process.




6. Hit Generate Report and find the downloaded csv in your downloads folder.

Post Event Report

Dashboard > Post Event Report

Generate Reports


Select a Report type

Login Report (Booth Rep Login Report) 

From Date

2024-10-01 02:35:41

Filter Columns

 What is your primary language or your language of preference?

To Date

2024-10-02 16:56:23

Generate Report